



## Chapter 17

# Land, Soils, Geology and Hydrogeology



## Appendix 17.1

# Site Walkover

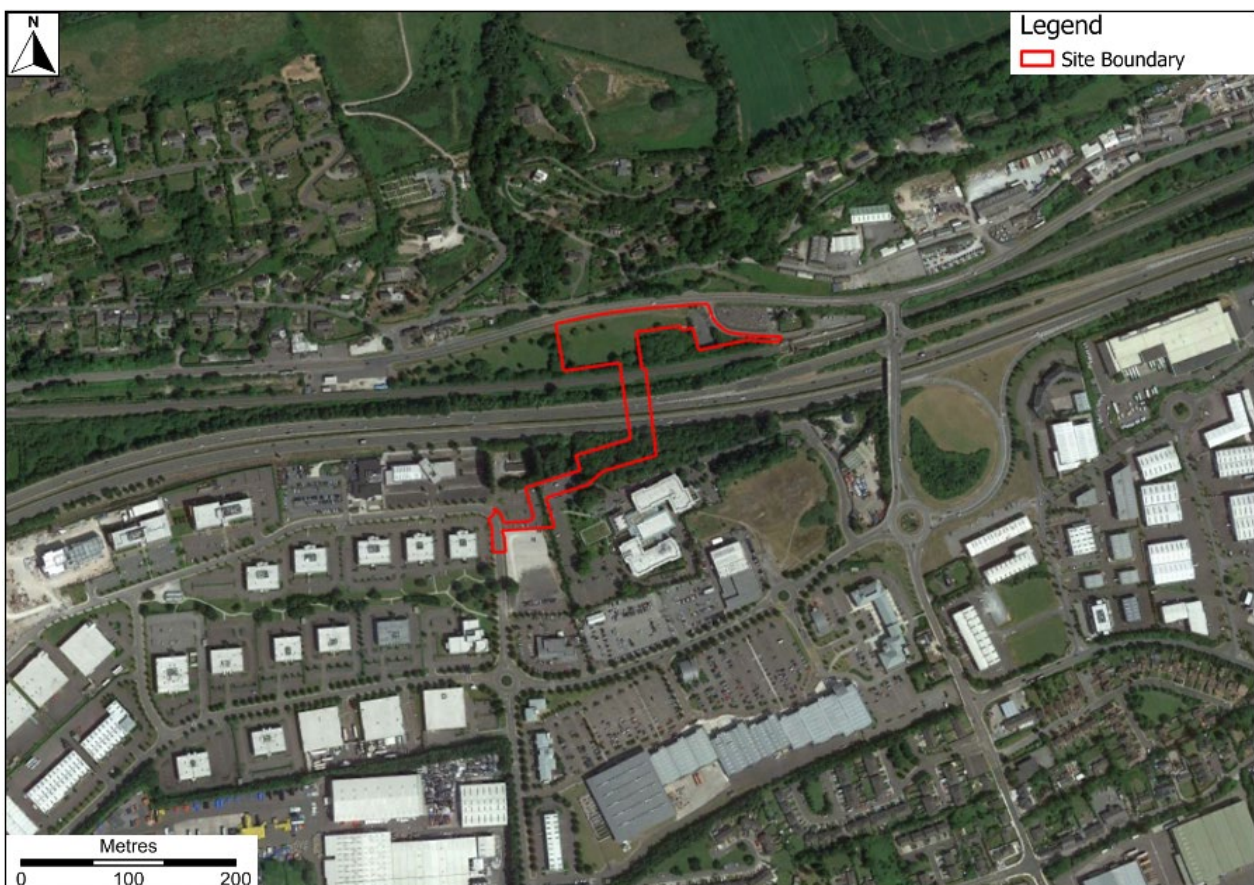
# Introduction

The following is a summary of the observations by the Land, Soils, Geology and Hydrogeology environmental impact assessment team following a site walkover of the Proposed Development. The walkover occurred on the 17<sup>th</sup> February 2022. The site walkover was undertaken in accessible portions of the site (see **Figure 1**), including:

- North of the N25 carriageway;
- Railway line; and
- South of the N25 carriageway.

Not all observations have been included in the summary for conciseness. Typically, only observations that could not have been determined from the desk study and that are relevant to Land, Soils, Geology and Hydrology have been included. The omission of an observation of a feature does not negate the feature's importance in terms of the Land, Soils, Geology and Hydrogeology environmental impact assessment.

The observations are described in **Table 1**.



**Figure 1: Site boundary of the Proposed Development.**



**Table 1: Key observations from the site walkover of the Proposed Development on 17/02/2022**

Photo ID	Caption	Date taken	Coordinates (ITM)
Figure_01	Hard standing area in north eastern portion of the site.	17/02/2022	575433, 572929

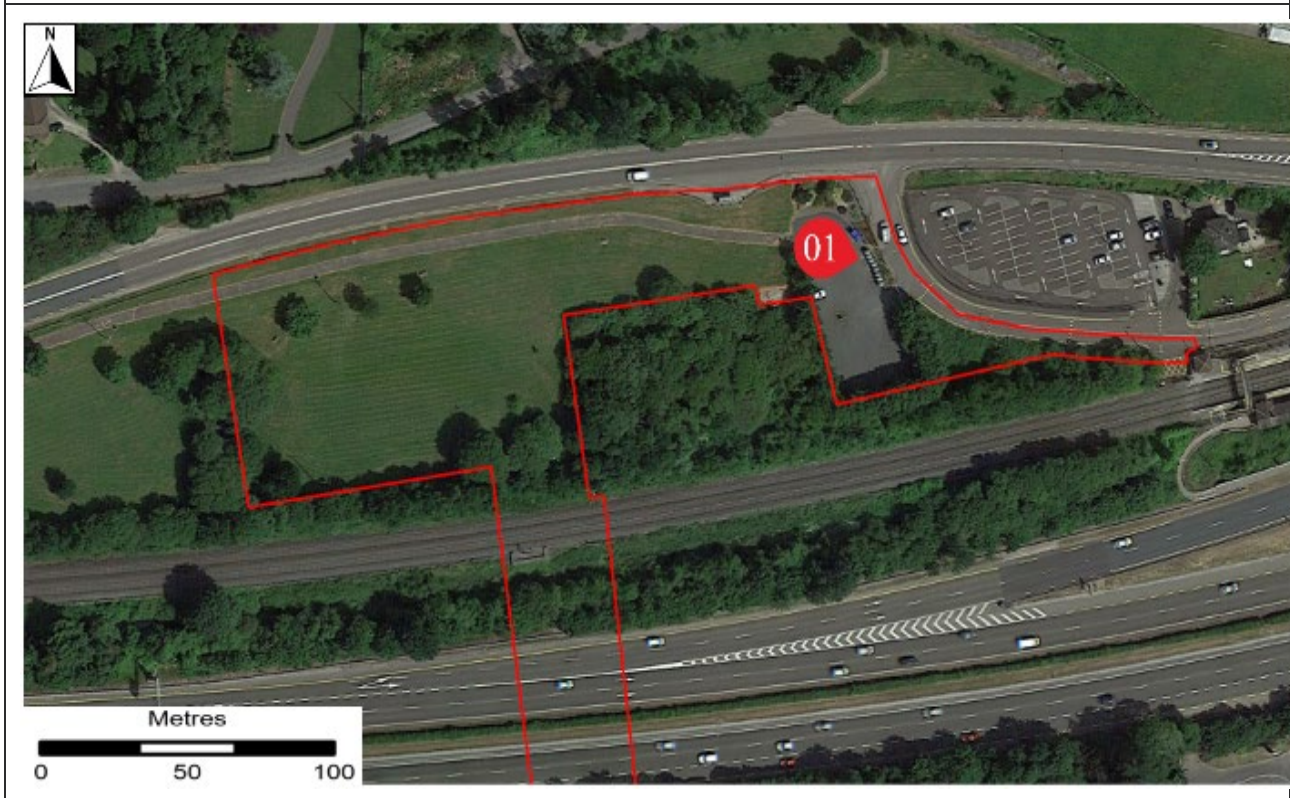




Photo ID	Caption	Date taken	Coordinates (ITM)
Figure_02	Subsurface services located to the west of the Proposed Development.	17/02/2022	575243, 572900

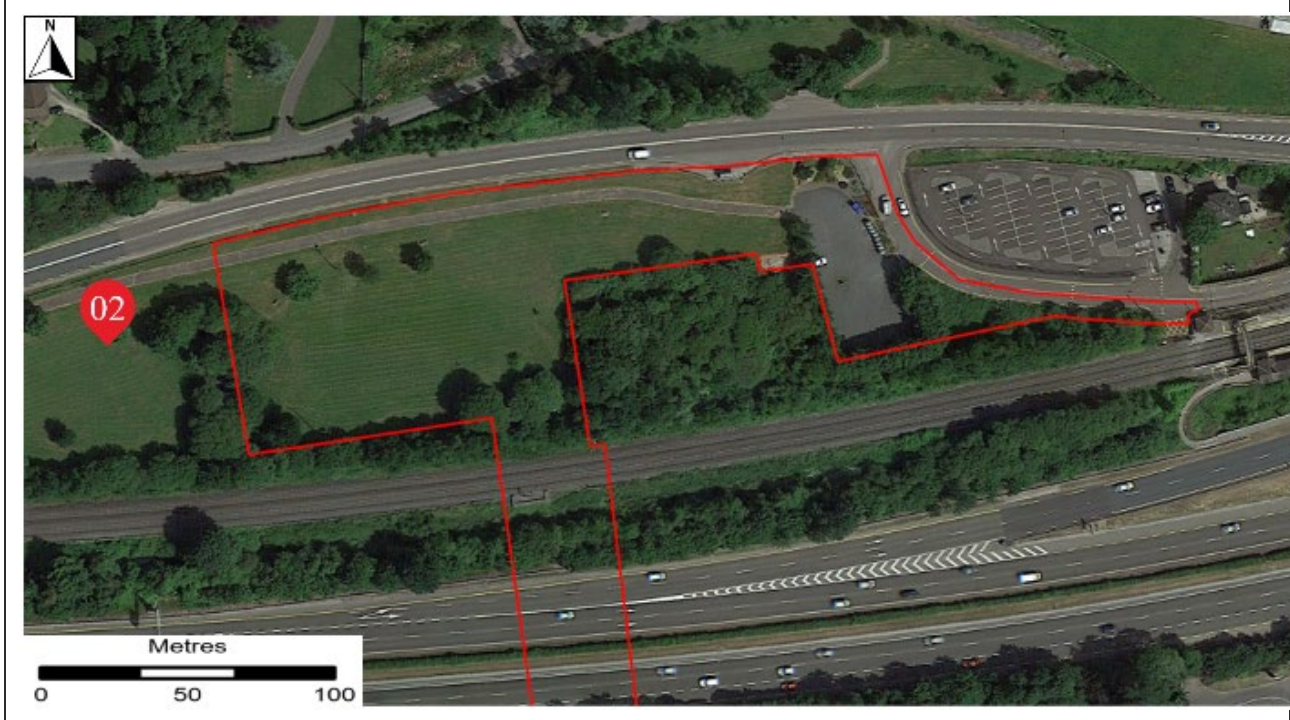




Photo ID	Caption	Date taken	Coordinates (ITM)
Figure_03	Overhead power lines along the northwest site boundary. Surface water ponding also encountered.	17/02/2022	575348, 572884

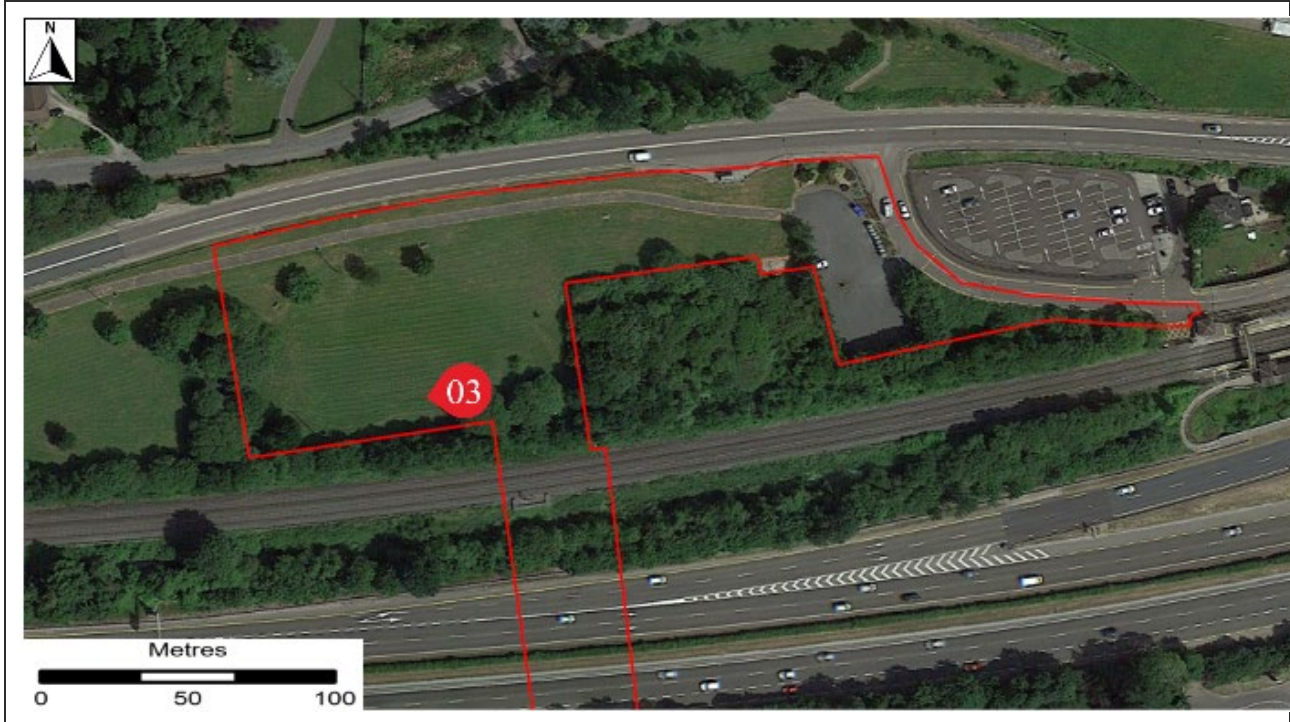




Photo ID	Caption	Date taken	Coordinates (ITM)
Figure_04	Railway line with several overhead power line crossings.	17/02/2022	575547, 572893

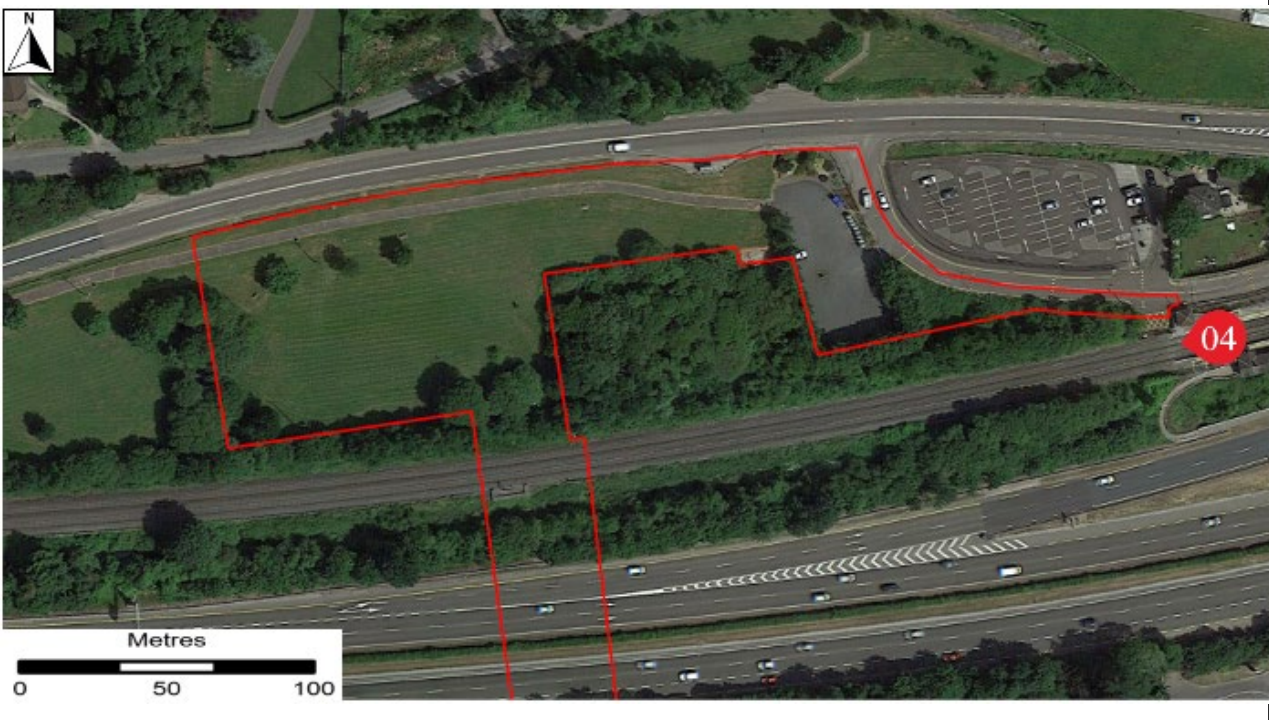




Photo ID	Caption	Date taken	Coordinates (ITM)
Figure_05	Level change between car parks south of the N25 carriageway.	17/02/2022	575244, 572720

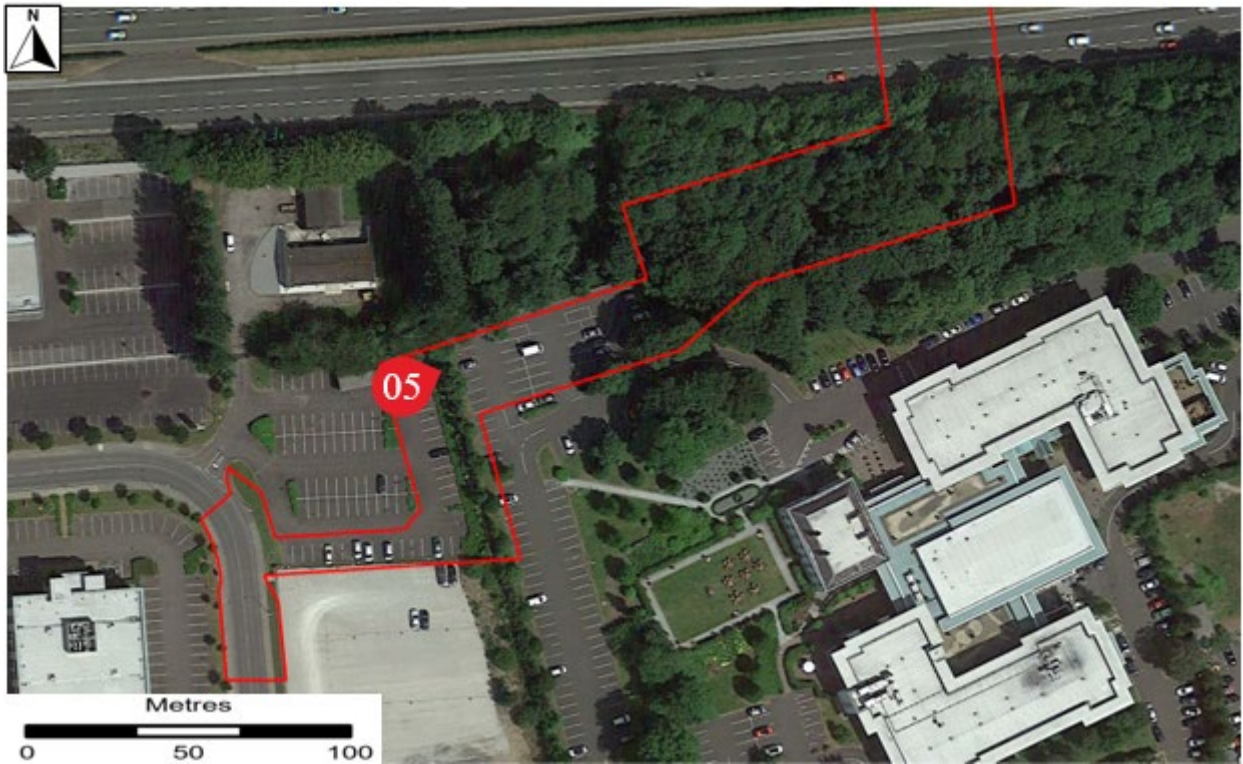




Photo ID	Caption	Date taken	Coordinates (ITM)
Figure_06	Settlement of hardstanding areas in southern section of the site.	17/02/2022	575260, 572730

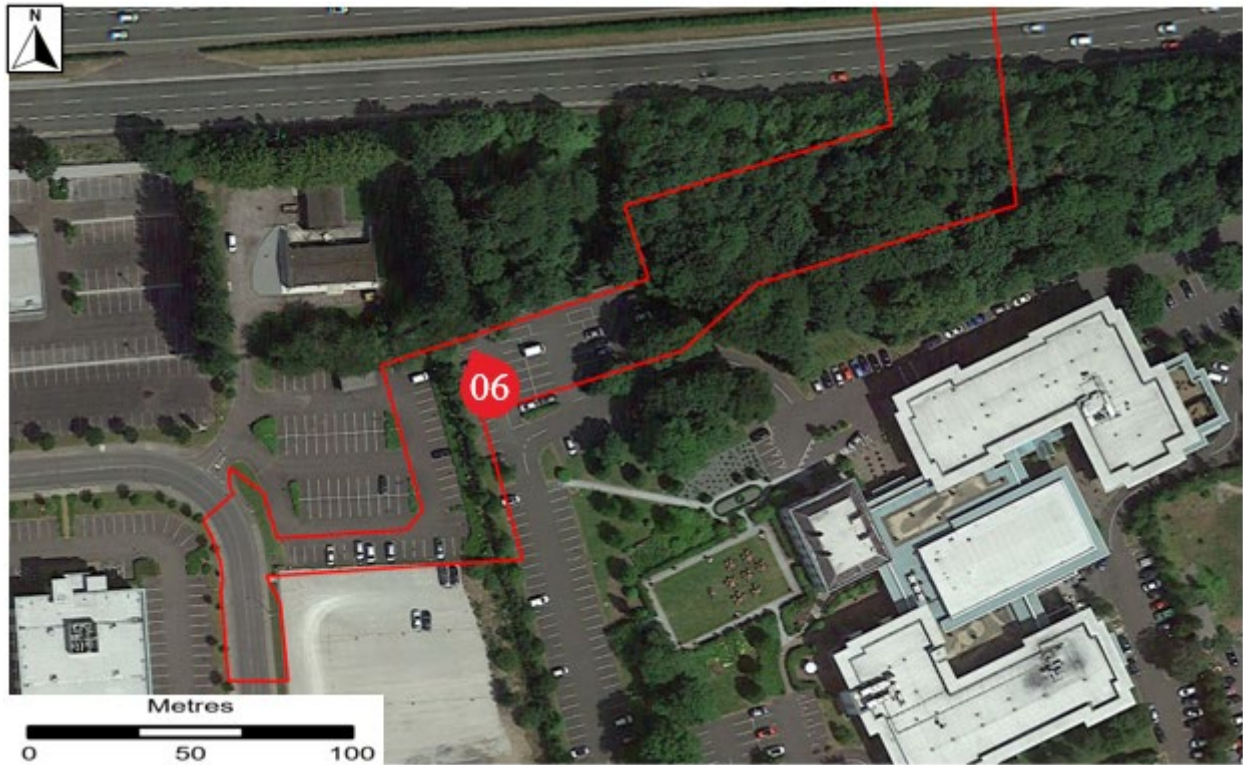




Photo ID	Caption	Date taken	Coordinates (ITM)
Figure_07	Open surface water drainage ditch to the south of the N25 carriageway.	17/02/2022	575440, 572762

